

INSTRUMENT APPROACH CHART - ICAO

GUERNSEY RNP

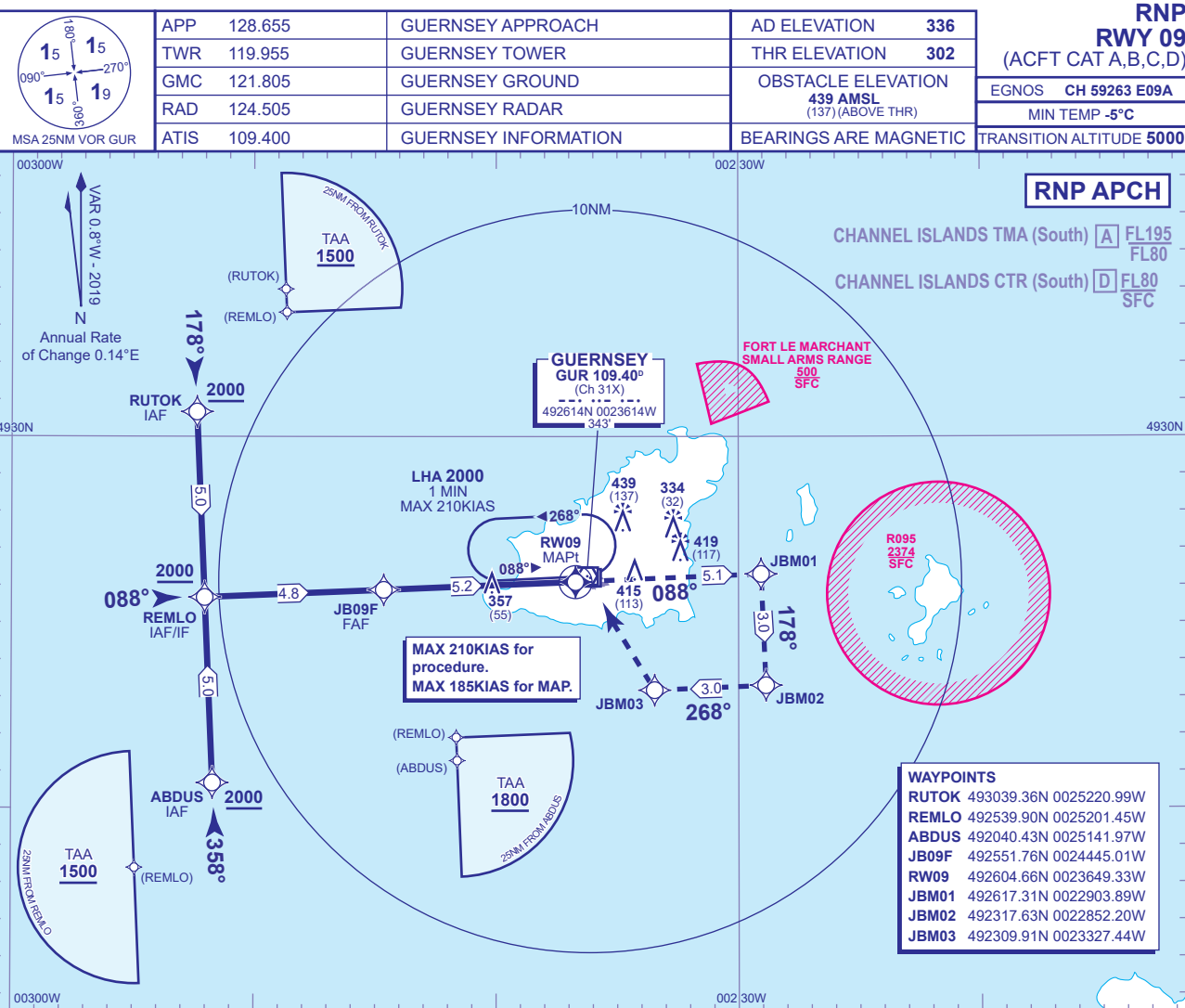
RWY 09

(ACFT CAT A,B,C,D)

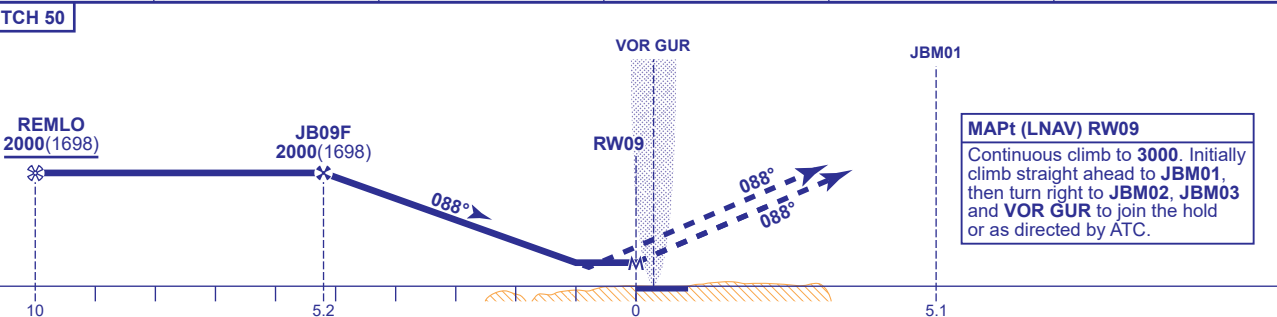
EGNOS CH 59263 E09A

MIN TEMP -5°C

TRANSITION ALTITUDE 5000



RECOMMENDED PROFILE LPV/VNAV - Vertical Path Angle 3.0° (LNAV 5.24%), 318FT/NM					
NM to RW09	5	4	3	2	1
ALT(HGT)	1940(1638)	1630(1328)	1310(1008)	990(688)	670(368)



Aircraft Category		A	B	C	D	Rate of descent	G/S KT	160	140	120	100	80
OCA (OCH)	LPV	502(200)	502(200)	502(200)	502(200)		FT/MIN	850	740	640	530	420
	LNAV/VNAV	600(298)	600(298)	600(298)	600(298)							
	LNAV	620(318)	620(318)	620(318)	620(318)							
VM(C)OCA (OCH AAL)		Total Area	740(404)	830(494)	930(594)	1030(694)						

NOTE 1 Pilots should 'Request RNP Approach' on first contact with Guernsey.  
2 VOR GUR required for Missed Approach.  
3 Aircraft will normally be required to hold not lower than 3000.

CHANGE (10/23): GUERNSEY RADAR FREQUENCY.